



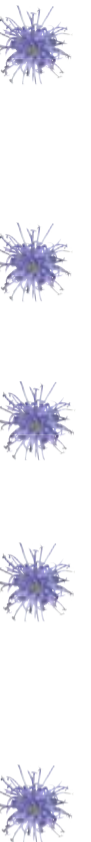
The hills of the Lewes Downs are made up of chalk rock which was formed 100 million years ago. Numerous fossil fish including sharks and rays have been found in the chalk pits around Lewes.

The wildflower-rich chalk grassland is one of the most diverse habitats in the world, supporting up to 50 plant species per square metre.

Grazing is the traditional and best way to look after chalk grassland. The sheep and cattle help to control the scrub, allowing herbs, grasses and other plants to flourish.

The first Southdown sheep were bred in Glynde by John Ellman in the 1770s. The breed became famous for improving sheep breeds throughout the world. Having declined in popularity during the last century, the Southdown is now registered as a rare breed.

Mount Caburn is an Iron Age hill fort, with ramparts and a v-shaped ditch that was eight metres wide and over two metres deep. It is thought its importance was as a sacred site rather than defensive settlement.



**Did you know?**

**Countryside Code**

The Countryside Code is designed to help us all to respect, protect and enjoy our countryside.

**Be safe - plan ahead and follow any signs**

Even when going out locally, get the latest information about weather conditions. Let someone know where you are going and when you expect to return.

**Leave gates and property as you find them**

Please respect the working life of the countryside, as our actions can affect people's livelihoods, our heritage, and the safety and welfare of animals and ourselves.

**Protect plants and animals and take your litter home**

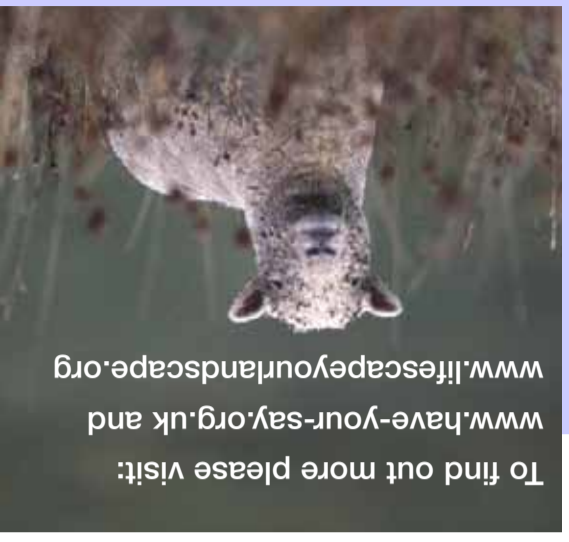
We have a responsibility to protect our countryside now and for future generations, so make sure you don't harm animals, birds, plants or trees.

**Lewes Downs 'Have Your Say' Project**

This is a local partnership project forming part of a larger European project "Lifescape your Landscape", which is part - funded by "INTERREG III".

**The Main Partners**

- Natural England 01273 476595 www.naturalengland.org.uk
- Phoenix House, 33 North Street, Lewes BN7 2PH
- South Downs Joint Committee 01243 558700 www.southdownsonline.org
- Victorian Barn, Victorian Business Centre, Ford Lane, Ford Nr Arundel BN18 0EF
- Sussex Wildlife Trust 01273 492630 www.sussexwt.org.uk
- Woods Mill, Henfield BN5 9SD
- Lewes Golf Club 01273 483474 www.lewesgolfclub.co.uk
- Chapel Hill Lewes BN7 2BB
- Registered Charity No: 207005



To find out more please visit: [www.have-your-say.org.uk](http://www.have-your-say.org.uk) and [www.lifescapeyourlandscape.org](http://www.lifescapeyourlandscape.org)

**Consider other people**

Showing consideration and respect for other people makes the countryside a pleasant environment for everyone. Where possible, use public transport, cycle and buy goods from local suppliers.

**Keep dogs on a lead**

The countryside is a great place to exercise dogs, but it's every owner's duty to make sure their dog is not a danger or nuisance to farm animals, wildlife or other people.

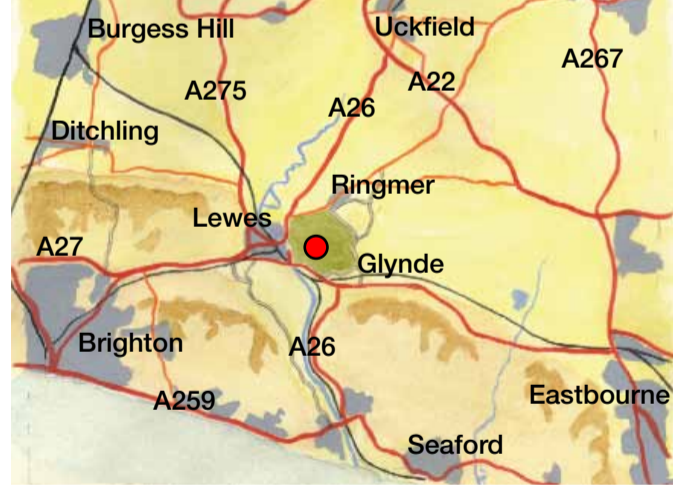
The South Downs near Lewes are a superb area of chalk downland rich in wildlife and ancient human history. These hills tower over the town dominating the skyline to the east, offering fine views across East Sussex for those exploring the network of footpaths.



*southdown sheep*

**How to find us**

Situated between Lewes and Glynde, Lewes Downs is within walking distance of both railway stations. There are various other access points, illustrated on the map overleaf.



**Useful Links**

- Traveline: 0871 2002233 [www.traveline.org.uk](http://www.traveline.org.uk)
- Action in Rural Sussex: [www.srcc.org.uk/](http://www.srcc.org.uk/)
- Bed & Breakfast: [www.lewes-area-bed-and-breakfast.com](http://www.lewes-area-bed-and-breakfast.com)
- East Sussex County Council: [www.eastsussex.gov.uk](http://www.eastsussex.gov.uk)
- English Heritage: [www.english-heritage.org.uk](http://www.english-heritage.org.uk)
- Lewes District Council: [www.lewes.gov.uk](http://www.lewes.gov.uk)
- Lewes Downs Project: [www.have-your-say.org.uk](http://www.have-your-say.org.uk)
- Lewes Tourist Information: 01273 483448
- Lewes Town Council: [www.lewes-tc.gov.uk](http://www.lewes-tc.gov.uk)
- Natural England: [www.naturalengland.org.uk](http://www.naturalengland.org.uk)
- South Downs Joint Committee: [www.southdownsonline.org](http://www.southdownsonline.org)
- Southdown Society: [www.southdownsheepsociety.co.uk](http://www.southdownsheepsociety.co.uk)
- Sussex Archeological Society: [www.sussexpast.co.uk](http://www.sussexpast.co.uk)
- Sussex Wildlife Trust: [www.sussexwt.org.uk](http://www.sussexwt.org.uk)
- Tourism in Sussex: [www.visitsussex.org](http://www.visitsussex.org)

**Protected area**

Because of its international importance, much of this area is protected by designations such as: Site of Special Scientific Interest; Special Area of Conservation and National Nature Reserve. These hills lie within the South Downs Area of Outstanding Natural Beauty and also includes a number of Scheduled Ancient Monuments.

**Walking on the reserve**

The reserve is hilly terrain, very steep, with narrow unsurfaced footpaths, and some stiles and gates. Sturdy footwear and clothing suited to the prevailing weather are recommended. Livestock graze across the site at different times of the year so please keep your dog on a lead and under control when near animals.

**Land open to access on foot**

You are welcome to enjoy this land on foot. To find out more please visit the website [www.countrysideaccess.gov.uk](http://www.countrysideaccess.gov.uk)



Access land



**Malling Down, Mount Caburn & Southerham**



Ivor Chuter LRPS



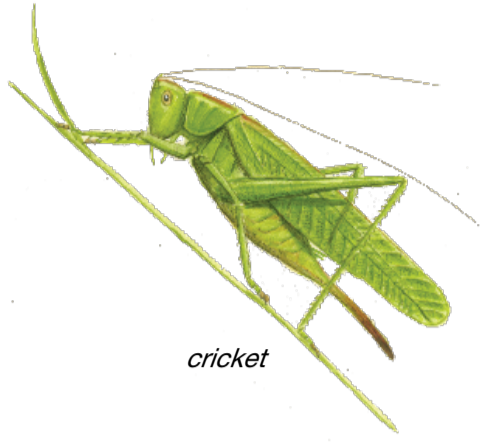
Illustrations by Neil Fletcher, [neil@artofnature.co.uk](mailto:neil@artofnature.co.uk) 12/2007  
 Photographers John Lees & David Plummer Design by Richard Cobden



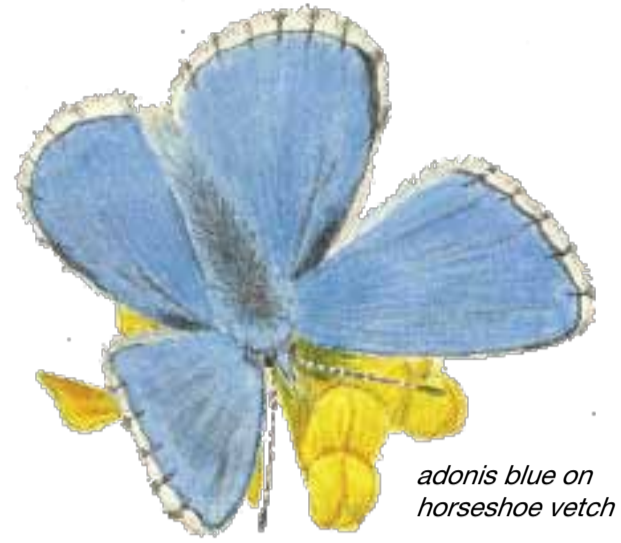
# Malling Down, Mount Caburn & Southerham



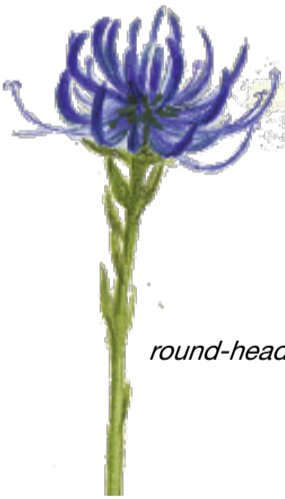
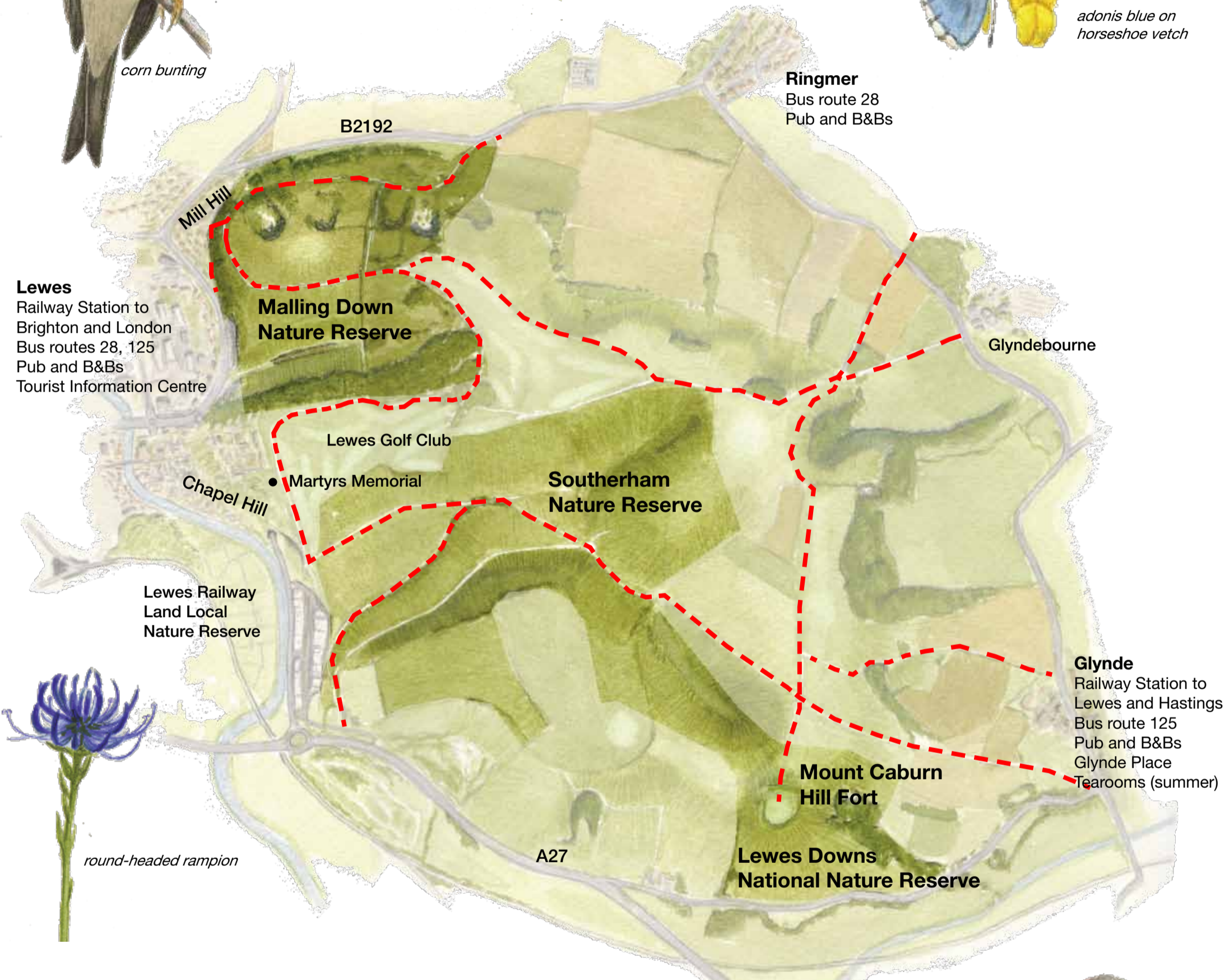
corn bunting



cricket



adonis blue on horseshoe vetch



round-headed rampion

## Travel Links

**Traveline**  
0871 2002233 [www.traveline.org.uk](http://www.traveline.org.uk)

## Train

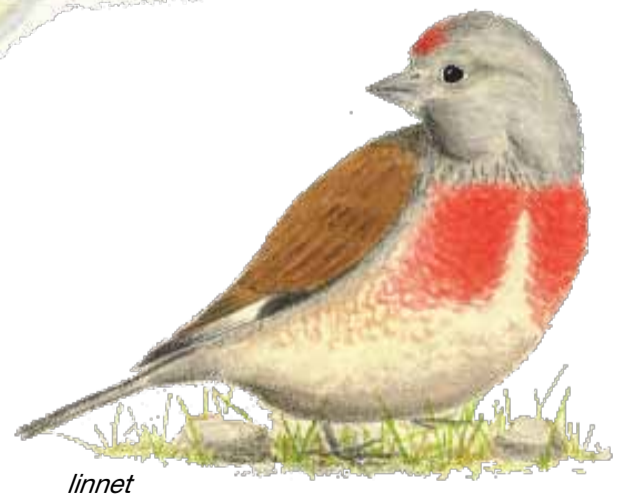
**National Rail Enquiries**  
0845 484950 [www.nationalrail.co.uk](http://www.nationalrail.co.uk)  
**Southern Railway**  
08451 272920 [www.southernrailway.com](http://www.southernrailway.com)

## Bus

**Brighton and Hove Bus Company**  
01273 886200 [www.buses.co.uk](http://www.buses.co.uk)  
**Countryliner Coach**  
01483 506919 [www.countryliner-coaches.co.uk](http://www.countryliner-coaches.co.uk)




silver spotted skipper



linnet



--- Footpaths  
 Areas open to access on foot