

2011-2012 *Your Autumn to Spring Wildlife Guide*

*Adults' Events, Family Events and Courses
with the Sussex Wildlife Trust*



Taking Care of Sussex



Welcome to the Sussex Wildlife Trust's Autumn to Spring Programme

Wildlife doesn't stop just because it's not summer anymore -
and neither do we!

There's plenty of events and courses going on for all the
family - so get yourself booked on..

..it's even easier now with
online booking!

just log on to the Sussex Wildlife Trust website and follow the
'What's On' link at the top of the page



Sussex Wildlife Trust
Woods Mill, Henfield, West Sussex BN5 9SD

01273 492630 – Main Reception
enquiries@sussexwt.org.uk
www.sussexwildlifetrust.org.uk
www.twitter.com/sussexwildlife

WildCall
01273 494777
for all your nature conservation enquiries

Registered Charity No 207005

Booking Information

- For booking events please ring 01273 497561, book online at www.sussexwildlifetrust.org.uk/events/index.htm or email swtbookings@sussexwt.org.uk unless otherwise stated. Office closed Saturday and Sunday.
- Payment can be made either by debit/credit card over the phone, online or by sending a cheque payable to the Sussex Wildlife Trust with a covering letter within five working days stating which event you have booked. Your booking will be confirmed once payment has been received.
- Bookings will be held for five working days, after this date if payment has not been received places will be reallocated.
- We do not accept liability for loss or damage to personal property on a Trust course or event.
- Family tickets are only available to Family Members and not to individual members or non-members.
- A Family ticket covers up to two adults and three children, who do not all need to be related. If the family group is bigger then the extra people will have to pay the appropriate individual rate.
- Please note that there will be no refunds for any customer cancellation within two weeks of the course. Application for a refund must be in writing or via email. Please note that there will be an administration charge of £3.00 for all cancellations of booked events costing less than £10.00 and £5.00 for events over £10.00.
- We reserve the right to cancel or change a bookable event at short notice. Events and courses will only run if a minimum number of people have booked. Attendees will be notified in advance if we do have to cancel any of our events/courses and the full fee refunded.

Events information

- Leaders will always be present at the start of each event. If the weather is poor, they will decide on the day whether to proceed.
- All the family are welcome. Please note that dogs are not allowed at events unless stated otherwise.
- Every effort is made to ensure you have a safe and enjoyable time, but please note that you attend events at your own risk.
- Please wear suitable clothing for the time of year and ensure adequate protection against the sun.
- For family events all children must be accompanied by an adult.
- Family events are suitable for children aged between 5 and 12; accompanying younger siblings are free, unless otherwise stated.

Courses information

For information regarding course booking, please see p.30.

Note that further details about course venues and itineraries are sent to attendees nearer the time of the course.

Getting There

Many of our events and courses are held at these locations:

- **Woods Mill** - Horn Lane, Henfield, BN5 9SD. 1½ miles south of Henfield village on the Shoreham Road. Compass Bus route 100 serves Woods Mill Mondays-Saturdays only. Please visit www.compass-travel.co.uk or call on 01903 690025
- **Seven Sisters Country Park** - Exceat, Seaford, BN25 4AD. 1 mile east of Seaford on the A259 Eastbourne Road. Bus routes 12 and 13 between Brighton and Eastbourne stop here. Activities and meeting point in the Pump Barn. **Please note that car parking charges apply operated by the local authority**
- **Stanmer Park** - Entrance off the A270 going east out of Brighton, just before the A27 underpass. Drive 1 mile through park towards church. Car park behind church. Grid Ref: TQ336096, nearest postcode BN1 9PZ
- **Lewes Railway Lands** - the new Linklater Pavilion is now the centre of activities, accessed from Railway Lane, Lewes, where there is a large public car park (charges apply). Grid Ref: TQ419100, nearest postcode BN7 2RF
- **The Downs Barn** - Lambleys Lane, Sompting Estate, BN14 9JX. Grid Ref. TQ156061. 180m east of Lyons Farm Retail Park - see www.somptingdowns.com/index.html for details

Moths and Marsh Frogs

Venue Linklater Pavilion, Lewes
Date Sunday 4th September
Time 10:00 - 12:30
Leader Michael Blencowe
Cost Free - but you can donate on-line
Suitability All children must be accompanied by an adult.
Dogs Dogs welcome if under close control.

Join us as we open our moth traps at the Linklater Pavilion (Traps will be opened at 10:00) and we reveal some of the amazing moths that were flying about last night. Then, after we release the moths, we will go for a walk around Lewes Railway Land Local Nature Reserve looking for birds, bugs.... and marsh frogs. Contact 07827 830891.

Toilets Disabled toilets available at the Linklater
Access Disabled access across reserve
Transport Regular buses and train services to Lewes



Cruise Alongside The Ouse : Part One - Upstream

Venue Linklater Pavilion, Lewes
Date Wednesday 7th September
Time 10:00 - 14:00
Leader Michael Blencowe
Cost Free - but you can donate on-line
Suitability All children must be accompanied by an adult.
Dogs Dogs welcome if under close control.

We'll take a gentle walk alongside the Ouse from Lewes up to Hamsey Island looking out for wildlife in, on and around the river as we go. It's a 4 mile round trip and we'll stop for lunch at Hamsey Island - please bring a packed lunch. Contact 07827 830891.

Toilets Disabled toilets available at the Linklater
Access No disabled access
Transport Regular buses and train services to Lewes

Cruise Alongside The Ouse : Part Two - Downstream

Venue Linklater Pavilion, Lewes
Date Thursday 8th September
Time 10:00 - 14:00
Leader Michael Blencowe
Cost Free - but you can donate on-line
Suitability All children must be accompanied by an adult.
Dogs Dogs welcome if under close control.

This time we're following the river to the sea and we'll stroll along the banks of the Ouse to Southease checking the river and surrounding meadows for wildlife as we go. At Southease we'll catch the train back to Lewes. (Please bring train fare - approx £2.30). Contact 07827 830891.

Toilets Disabled toilets available at the Linklater
Access No disabled access
Transport Regular buses and train services to Lewes

Strange Phantoms - The Heathland Wildlife of West Sussex

Venue Midhurst - Cowdray Room, Capron House, North Street, Midhurst, GU29 9DT
Date Wednesday 14th September
Time 19:30 - 21:30
Leader Jane Willmott & Michael Blencowe
Cost Free - but you can donate on-line
Suitability Suitable for adults and older children
Dogs Not suitable for dogs

Reserve manager Jane Willmott and Community Wildlife Officer Michael Blencowe present an illustrated talk on the beautiful, fascinating and sometimes strange creatures that inhabit the wonderful heathlands of West Sussex. Learn about the animals and plants that live here, their ecology and the management needed to ensure their future survival. Contact 07557 162406.

Toilets Available & disabled available
Access Disabled access
Transport Regular buses to Midhurst from across West Sussex



Wildlife Walk at Iping Common

Venue Iping Common car park, Elsted Road (south of A272, west of Midhurst)
Date Saturday 17th September
Time 10:00 - 12:30
Leader Jane Willmott & Michael Blencowe
Cost Free - but you can donate on-line
Suitability Suitable for children aged 10 and above. Children must be accompanied by an adult
Dogs Dogs must be on a lead

A morning walk across our Iping Common reserve. As the summer colours start to fade the heath begins to take on a different appearance and the wildlife that can be found here starts to prepare for the coming winter months. Join us to learn more about the fascinating wildlife of the heath and find out more about the management that will be taking place to maintain this threatened habitat. Contact 07557 162406.

Toilets Not available
Access No disabled access
Transport No. 91/92 bus passes Iping Common on A272

Wildlife Walk at Graffham Common

Venue National Trust car park at Lavington Common. Un-named road, west of A285 approx. a mile north of Duncton, nearest postcode GU28 0QL
Date Saturday 17th September
Time 13:30 - 16:00
Leader Jane Willmott & Michael Blencowe
Cost Free - but you can donate on-line
Suitability Suitable for children aged 10 and above. Children must be accompanied by an adult
Dogs Dogs must be on a lead

Join the reserve manager on an afternoon walk around our reserve at Graffham Common. The commons and heathlands of West Sussex are a rare habitat and provide a home to some of the county's most amazing wildlife. Join us to learn more about them and the management that is required to ensure their survival. Contact 07557 162406..

Toilets Not available
Access No disabled access
Transport No public transport

Once again, Sussex Wildlife Trust is teaming up with professional wildlife photographer David Plummer for the ever popular badger evenings in his north Sussex wood, where you can watch a real live badger family as they emerge from their sett - much better than on the telly! Be sure to book in advance as places are limited.

events at Rye Harbour



There are lots of different events going on at Rye Harbour Local Nature Reserve this summer for both adults and children. Contact the Lime Kiln Cottage Information Centre on 01797 227784 or check out the website:

www.wildrye.info

including:

- Shrimping at Rye Harbour
- Camber Castle Exploration
- The Big Draw
- Glorious Mud
- Winter Birds at the Beach Reserve
- Festive Beach Clean

and lots more besides!

Evenings with Badgers

Venue Rusper, nr Horsham
meet at Rusper Village Hall

Dates Monday 23rd April
Wednesday 25th April
Monday 30th April

Time 18:00 - 22:00 approx

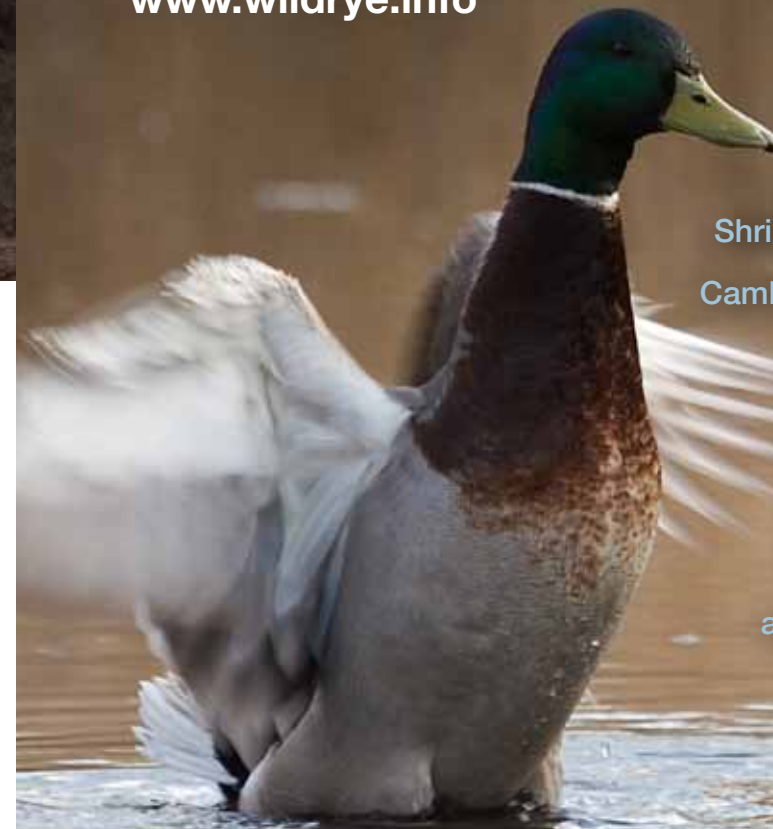
Leader David Plummer

Cost Members/concessions £18
Non-members £22

The evening will start with an indoor introductory talk at Rusper Village Hall. You will then drive in your own cars to the wood nearby. Please wear suitable warm outdoor clothing and footwear for the weather conditions as you could be sitting down for 2½–3 hours. Please bring binoculars if you have them. Please also bring a torch. Further details will be sent on booking. Booking essential as places are limited. No children under the age of 10 years. Sorry no dogs. Toilets at Rusper Village Hall. No toilets or disabled access at the wood.

ON-LINE BOOKING?

simply go to
www.sussexwildlifetrust.org.uk
and click on the
'What's On'
button at the top of the screen!

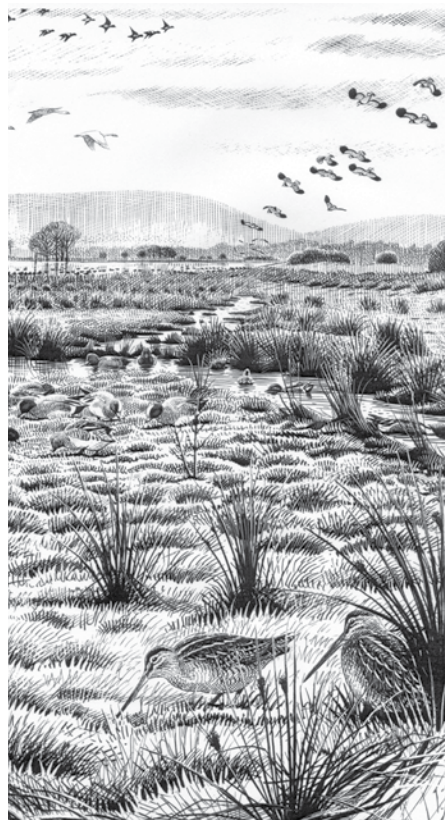


A Figure of 8 Heathland Hike at Iping & Stedham Commons

Venue Iping Common car park, Elsted Road (south of A272 west of Midhurst)
Date Saturday 10th December
Time 10:00 - 15:00
Leader Jane Willmott & Michael Blencowe
Cost Free - but you can donate on-line
Suitability Suitable for children aged 10 and above. Children must be accompanied by an adult
Dogs Dogs must be on a lead

An opportunity to spend a full day exploring the beautiful heathlands of West Sussex in winter. In the morning we will search for winter wildlife on a long loop around Iping Common. We will return to our start point at approx 12:30 where you can either leave or join us as we take another looping hike around adjacent Stedham Common. Bring a packed lunch if you plan on joining us for the full day. Contact 07557 162406.

Toilets Not available
Access No disabled access
Transport No. 91/92 bus passes Iping Common on A272



© John Davies

Birdwatch on the Lewes Brooks

Venue Linklater Pavilion, Railway Lane, Lewes, BN7 2FG
Date Friday 16th December
Time 10:00 - 13:00
Leader Michael Blencowe
Cost Free - but you can donate on-line
Suitability All children must be accompanied by an adult
Dogs Sorry no dogs today

Join us for a walk along the Ouse to the Lewes Brooks south of Lewes where we will search for wintering ducks, waders and other birds on the wet meadows. Contact 07827 830891.

Toilets Available at Linklater Pavilion
Access No disabled access due to stiles and terrain
Transport Regular buses and train services to Lewes

Chalk Walk : Glynde to Lewes via Caburn

Venue Glynde railway station, Glynde, BN8 6RX.
Date Tuesday 3rd January
Time 10:30 - 14:30
Leader Michael Blencowe
Cost Free - but you can donate on-line
Suitability All children must be accompanied by an adult.
Dogs Dogs welcome if under close control.

You can talk the talk – but can you walk the chalk? Start the New Year with a hike over the Lewes Downs to burn off those Christmas calories. We will meet at Glynde railway station and ascend Mount Caburn looking out for winter wildlife as we go. After experiencing the amazing views from the summit we'll descend through our reserve at Southerham back into Lewes. Please bring a packed lunch. Contact 07827 830891.

Toilets Only at Glynde or Lewes
Access No disabled access due to steep terrain
Transport Hourly train services Lewes to Glynde (single ticket price approx. £2.30)

Exploring Graffham Common in Winter

Venue National Trust car park at Lavington Common. Un-named road, west of A285 approx. a mile north of Duncton, nearest postcode GU28 0QL
Date Saturday 14th January
Time 10:30 - 14:30
Leader Jane Willmott & Michael Blencowe
Cost Free - but you can donate on-line
Suitability Suitable for children aged 10 and above. Children must be accompanied by an adult
Dogs Dogs must be on a lead

Start 2012 as you mean to go on – by getting out into the countryside and discovering more of our wonderful wildlife. Join us as we take a gentle hike around our reserve at Graffham Common. There's plenty to explore so we'll be out over lunch. Please bring a packed lunch. Contact 07557 162406.

Toilets Not available
Access No disabled access
Transport No public transport

Jack's Back!

Venue Linklater Pavilion, Railway Lane, Lewes, BN7 2FG
Date Friday 13th January
Time 10:00 - 13:00
Leader Michael Blencowe
Cost Free - but you can donate on-line
Suitability All children must be accompanied by an adult
Dogs Sorry no dogs today

Lurking in the wet meadows around Lewes is one of Britain's most elusive birds. Jack Snipe are winter visitors to Sussex but you'll never see them. We'll start the walk at the Linklater Pavilion with an illustrated lecture which will teach us more about this secretive species. Then we'll head out to search along the Ouse for this mythical bird. A search for an invisible bird? On Friday 13th? Of course we'll see it! Limited spaces so booking essential. Contact 07827 830891.

Toilets Available at Linklater Pavilion
Access No disabled access due to stiles and terrain
Transport Regular buses and train services to Lewes



photo © Hugh Clark



Spring Returns to Graffham Common

Venue National Trust car park at Lavington Common. Un-named road, west of A285 approx. a mile north of Duncton, nearest postcode GU28 OQL

Date Sunday 18th March
Time 10:30 - 13:00

Leader Jane Willmott & Michael Blencowe

Cost Free - but you can donate on-line

Suitability Suitable for children aged 10 and above. Children must be accompanied by an adult

Dogs Dogs must be on a lead

Join us as we go searching for those first signs of spring around our Graffham Common reserve. As well as looking – and listening – for wildlife we will be explaining more about the management of the site and how we will be working to improve the habitat in the future. Contact 07557 162406.

Toilets Not available
Access No disabled access
Transport No public transport

Spring Migrants Return to Lewes

Venue Linklater Pavilion, Railway Lane, Lewes, BN7 2FG

Date Friday 20th April
Time 10:00 - 13:00

Leader Michael Blencowe

Cost Free - but you can donate on-line

Suitability All children must be accompanied by an adult.

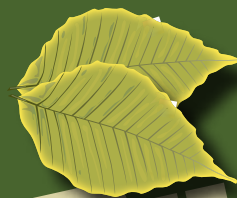
Dogs Dogs under close control

Spring migrants are back from Africa and are heading up the Ouse Valley. We'll take a walk around the Lewes Railway Land Local Nature Reserve and welcome them back from their winter break. The walk will start with a brief illustrated talk about our migrants; find out where 'our' birds have been all winter and how to identify them. Contact 07827 830891.

Toilets Available

Access Disabled access on paths around the reserve

Transport Regular buses and train services to Lewes



Bushcraft in the woods

with Tom Forward - our own Forest Schools expert



Bushcraft Day for CHILDREN £15.00 per person

Venue Tilgate Park, Crawley, West Sussex, RH10 5PQ [meet next to toilet block in Tilgate Park main car park - no need to pay for parking for drop off and collection of children]

Date Sunday 25th October
Time 10:00 - 15:00
Dogs Sorry no dogs

Suitable for children aged 8-14 years. **Children do not need to be accompanied by an adult.** Enjoy a great day outdoors in half term and learn some useful bushcraft skills in the woods. Find out how to survive in the wild by building a shelter, practising fire lighting skills and using hand tools to make things from green woods and other natural materials found in the woods. Please bring a packed lunch.

Toilets Available
Access No disabled access
Transport Nearest bus stop at Tilgate Parade, 10 minutes walk from meeting point

Booking essential - 01293 519086 or 07771 375254, or e-mail tomforward@sussexwt.org.uk

Bushcraft Day for CHILDREN £15.00 per person

Venue Leechpool and Owlbeech Woods, Harwood Road, Horsham - meet in the Woods visitor car park - free parking

Date Monday 26th October
Time 10:00 - 15:00
Dogs Sorry no dogs

Suitable for children aged 8-14 years. **Children do not need to be accompanied by an adult.** Enjoy a great day outdoors in half term and learn some useful bushcraft skills in the woods. Find out how to survive in the wild by building a shelter, practising fire lighting skills and using hand tools to make things from green woods and other natural materials found in the woods. Please bring a packed lunch.

Toilets Not available
Access No disabled access
Transport Local bus stop 2 minutes walk from meeting point in car park

it's the **springtime** **HOLIDAY CLUB!**

Everyone gets a holiday with our Holiday Clubs!

Leave your kids with us for a few hours - they get the time of their lives, and you can do what you like!

All of our children's educational leaders are fully CRB-checked, fully-trained and have been with us for years so you can rest assured - and get a well-earned rest yourself!

- ✓ lots of running around - use up some of that energy
- ✓ outside in the open air as much as possible
- ✓ practice new crafts
- ✓ learn about nature
- ✓ different activities every day



Members £9 Non-members £12 (except for Owlbeech events)

Suitable for 6-11 year olds.

Children do not need to be accompanied by an adult.

Please make sure they have a packed lunch and drink, and wear suitable outdoor clothing/footwear and sun protection for the weather conditions.

Booking essential. Please ring Filma Dyer on 01273 497561 or e-mail swtbookings@sussexwt.org.uk or **BOOK ONLINE..**



STANMER PARK!



Easter Holiday Club
Meet on the green in front of the Church in Stanmer Park

Dates Wednesday 4th April
Wednesday 11th April
Time 10:30 - 14:30

Come and enjoy four hours of environmental fun and games – parents stay at home! Please bring a packed lunch and drink. Please wear suitable outdoor clothing/footwear. Booking essential.

Toilets and café in Stanmer Village. Not suitable for the disabled. Sorry no dogs.

Buses 24 and 25 from Brighton stop outside Stanmer Park. Falmer Station less than 1 mile away. Bus no. 78 will take you into the park itself.

TILGATE PARK!

Easter Holiday Club
Meet in the main car park, Tilgate Park, Titmus Drive, Crawley, RH10 5PQ

Dates Thursday 5th April
Thursday 12th April
Time 10:30 - 14:30

Come and enjoy four hours of environmental fun and games – parents stay at home! Please bring a packed lunch and drink. Please wear suitable outdoor clothing/footwear. Please wear adequate sun protection. Booking essential.

Toilets and disabled toilets available. Disabled access

No. 2 bus stops along Ashdown Drive then 800m walk to park

OWLBEECH & LEECHPOOL WOODS!

Easter Holiday Club
Meet in the main car park, Owlbeech & Leechpool Woods, Harwood Road, Horsham, RH13 6SG

Dates Tuesday 3rd April
Tuesday 10th April
Time 10:30 - 12:30

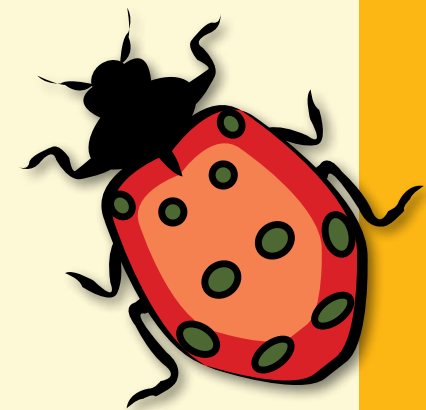
Come and enjoy two hours of environmental fun and games – parents stay at home! Booking essential.

No toilets at this location. No disabled access

No. 65 bus stops on Harwood Road close to the woods



this shorter event
only £4.50 for members
£6 for non-members



clickety-click

did you know that you can book most of our events online?

it's quick 'n' easy

just go to our website and click on the 'What's On' button at the top of the page

doddle!

HOLIDAY CLUB!

near Seven Sisters Country Park
with Ronnie Reed

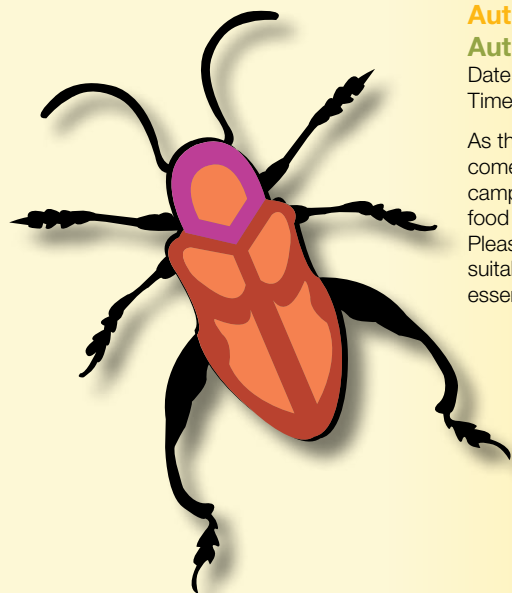


Autumn Holiday Club

Autumn Camp

Date Tuesday 25th October
Time 10:30 - 14:30

As the days shorten and the nights get longer come out into the woods, and join our autumn camp. Find out how to light fires, find and cook food and build shelters ready for the winter. Please bring a packed lunch and drink. Wear suitable outdoor clothing/footwear. Booking essential.



Members £9 Non-members £12

Suitable for 7-11 year olds. **Children do not need to be accompanied by an adult.** Please bring a packed lunch and drink and wear suitable outdoor clothing/footwear and sun protection for the weather conditions.

Meet at Forestry Commission car park on Littlington Road ½ mile north of Seven Sisters Country Park.

Toilets available at Seven Sisters Country Park and in Forestry Commission car park on the Littlington Road. Disabled toilets at Seven Sisters Country Park. Limited disabled access to woodland.

Regular bus service between Eastbourne and Brighton on A259. Railway station at Seaford.

Booking essential. Book online at sussexwildlifetrust.org.uk or ring Filma Dyer on 01273 497561, or e-mail swtbookings@sussexwt.org.uk

Easter Holiday Club

The Friston Trail

Date Tuesday 3rd April
Time 10:30 - 14:30

Using a compass and map follow our trail through Friston Forest to find our secret camp site in the midst of the woodland. Help us to set up a camp and earn your reward with a treat cooked over a fire which you have helped to light.

Please bring a packed lunch and drink. Please wear suitable outdoor clothing/footwear. Booking essential.

Easter Holiday Club

The Friston Camp

Date Thursday 5th April
Time 10:30 - 14:30

Join us at the Friston forest camp. Explore the woodland with us, practice fire lighting and learn some basic woodcraft skills including shelter building and tool use.

Please bring a packed lunch and drink. Please wear suitable outdoor clothing/footwear.

Booking essential.

Easter Holiday Club

Trails and Signs

Date Tuesday 10th April
Time 10:30 - 14:30

Find our camp again and develop some tracking and trailing skills. Enjoy lunch around the fire, have a go at cooking on an open fire and practice using tools to make objects out of green wood.

Please bring a packed lunch and drink. Please wear suitable outdoor clothing/footwear. Booking essential.

Poo and Paw Prints - at Lewes

Venue Linklater Pavilion, Railway Land Nature Reserve, Railway Lane, Lewes
Dates Saturday 8th October
Time 11:00 - 13:00
Leader Kate Tiffin
Cost Members: Adults £5 /Child £6 / Family Ticket £13.
 Non-members: Adult £6 /Child £7
Suitability Suitable for 6-11 year olds. All children must be accompanied by an adult
Dogs Sorry no dogs
Booking Book on-line or call 01273 497561

Become a nature detective and find out which animals have been visiting the reserve by identifying their tracks and signs. Booking essential.

Toilets Available at Linklater Pavilion
Access Some paths accessible to wheelchairs but may restrict participation in some activities
Transport Towns centre buses 2 minutes walk away. Lewes railway station 10 minutes walk away



Poo and Paw Prints - at Stanmer Park

Venue Stanmer Park, Lewes Road, Brighton
Dates Saturday 15th October
Time 11:00 - 13:00
Leader Kate Tiffin
Cost Members: Adults £5 /Child £6 / Family Ticket £13.
 Non-members: Adult £6 /Child £7
Suitability Suitable for 6-11 year olds. All children must be accompanied by an adult
Dogs Sorry no dogs
Booking Book on-line or call 01273 497561

Become a nature detective and find out which animals have been visiting the reserve by identifying their tracks and signs. Meet on the green in front of the church. Booking essential.

Toilets Toilet and café in Stanmer Village.
Access Not suitable for the disabled.
Transport Trains to Falmer Station. Buses no. 28 and 29 stop at park entrance. Once mile walk to meeting point.

Poo and Paw Prints - at Woods Mill

Venue Woods Mill, Henfield
Dates Saturday 22nd October
Time 11:00 - 13:00
Leader Kate Tiffin
Cost Members: Adults £5 /Child £6 / Family Ticket £13.
 Non-members: Adult £6 /Child £7
Suitability Suitable for 6-11 year olds. All children must be accompanied by an adult
Dogs Sorry no dogs
Booking Book on-line or call 01273 497561

Become a nature detective and find out which animals have been visiting the reserve by identifying their tracks and signs. Booking essential.

Toilets Available
Access Disabled access
Transport Compass Bus no. 100 stops outside Woods Mill



Autumn Watch at Bexhill

Venue Meet outside the New Inn, 32 Ninfield Road, Sidley Green, Bexhill TN39 5AB
Dates Tuesday 25th October
Time 10:30 - 13:00
Leader Kim Richards
Cost Free - but you can donate on-line
Suitability Families. All children must be accompanied by an adult
Dogs Sorry no dogs
Booking No booking necessary

Celebrate the beauty of Autumn in the Pebsham Countryside Park Project area. We will be looking at how different animals and birds in the area prepare for winter and making feeders and mini habitats.

Wet weather alternative at Sidley Community Centre (a few mins walk away)
 Contact telephone number on day of event: 07585 901360.

Toilets Not available
Access No disabled access
Transport Regular bus services

Forest School Taster Day

Venue Meet outside the New Inn, 32 Ninfield Road, Sidley Green, Bexhill TN39 5AB
Dates Wednesday 26th October
Time 10:30 - 15:00
Leader Kim Richards
Cost Free - but you can donate on-line
Suitability Families. All children must be accompanied by an adult
Dogs Sorry no dogs
Booking Book on-line or call 01273 497561

Come and get a taste of woodland and bushcraft skills with the Sussex Wildlife Trust. This will be a fun day in the countryside and will include a level walk to the site and a camp fire lunch. Booking essential as places are limited.

Toilets Not available
Access No disabled access
Transport Regular bus services

The Adventures of Stickman - Woods Mill

Venue Woods Mill, Henfield
Dates Wednesday 26th October
Time 11:00 - 13:00
Leader Kate Tiffin
Cost Members: Adults £5 /Child £6 / Family Ticket £13.
 Non-members: Adult £6 /Child £7
Suitability Suitable for 4-7 year olds. All children must be accompanied by an adult
Dogs Sorry no dogs
Booking Book on-line or call 01273 497561

Outdoor fun for children aged 4-7 based on the adventure of the intrepid Stickman! Booking essential.

Toilets Available.
Access Disabled access
Transport Compass Bus no. 100 stops outside Woods Mill

The Adventures of Stickman - Portslade

Venue Easthill Park, Portslade, Brighton
Dates Thursday 27th October
Time 11:00 - 13:00
Leader Kate Tiffin
Cost Members: Adults £5 /Child £6 / Family Ticket £13.
 Non-members: Adult £6 /Child £7
Suitability Suitable for 4-7 year olds. All children must be accompanied by an adult
Dogs Sorry no dogs
Booking Book on-line or call 01273 497561

Outdoor fun for children aged 4-7 based on the adventure of the intrepid Stickman! Booking essential.

Toilets Available
Access Disabled access
Transport Brighton buses no. 1, 1A, 95A, N96 & N98 all stop in Portslade Old Village. Short walk from Easthill Park.

Gruffalo Pie

Venue Seven Sisters Country Park
 Meet at the Pump Barn behind the Visitor Centre at Seven Sisters Country Park, Exceat, nr Seaford
Dates Wednesday 4th April
Time 10:30 - 13:00
Leader Ronnie Reed
Cost Members: Adults £5 /Child £6 / Family Ticket £13.
 Non-members: Adult £6 /Child £7
Suitability Family event. Suitable for 5-7 year olds. Children must be accompanied by an adult
Dogs Sorry no dogs
Booking Book on-line or call 01273 497561

Come for a stroll through the deep, dark wood with mouse and meet the other animals in Friston Forest. Enjoy lots of hands on activities on the way before gathering around the campfire for a Gruffalo Pie feast. Booking essential.

Toilets Toilets at Visitor Centre. Disabled toilet at Seven Sisters Country Park.
Access Limited disabled access to woodland. Car park charges apply.
Transport Regular bus service from Eastbourne and Brighton along A259



Taking Care of Sussex



Halloween Horrors!

Venue Woods Mill, Henfield
Dates Friday 28th October OR
 Saturday 29th October
Time 17:30 - 19:30
Leader Kate, Katie and Lynda
Cost Members: Adults £5 /Child £6 /
 Family Ticket £13
 Non-members: Adult £6 /Child £7
Suitability All children must be accompanied by
 an adult
Dogs Sorry no dogs
Booking Book on-line or call 01273 497561

Take a candlelit walk around the woods and watch out for ghosts in the trees. Get up close and meet some real owls before completing a spooky quiz about nocturnal animals. Make your own bat mask and Halloween cards.

Toilets Available
Access Wheelchair accessible and disabled toilets
Transport No public transport



A Winter's Tale

Venue Seven Sisters Country Park
 Meet at the Pump Barn behind the Visitor Centre at Seven Sisters Country Park, Exceat, nr Seaford
Dates Saturday 3rd December
Time 14:30 - 16:30
Leader Ronnie Reed
Cost Members: Adults £5 /Child £6 /
 Family Ticket £13
 Non-members: Adult £6 /Child £7
Suitability Suitable for 6-11 year olds. All children must be accompanied by an adult
Dogs Sorry no dogs
Booking Book on-line or call 01273 497561

As the year draws to a close and Christmas approaches we celebrate the winter season by dressing a tree in our woodland. Join us to make Christmas wreathes to carry into the woods as dusk falls to decorate a tree in Friston Forest. Make winter lanterns to carry home with you and create your own Christmas decorations out of natural materials. As evening closes in listen to a winter's story in the magic of the Pump Barn. Booking essential.

Toilets Toilets at Visitor Centre.
Access Disabled access to Pump Barn. Limited disabled access to woodland. Car park charges apply
Transport Regular bus service between Eastbourne and Brighton along the A259

Tree Dressing

Walk around the wintery woods, make decorations from natural materials and hang them on our 'Christmas tree'. Finish off with some rousing Christmas carols and hot chocolate. Booking essential.

Saturday 26th November Linklater Pavilion, Lewes
 Toilets in Linklater Pavilion. Some all weather surfaces, but terrain may restrict participation in some activities for wheelchair users.
 Towns centre buses 2 minutes walk away. Lewes railway station 10 minutes walk away.

Saturday 3rd December Woods Mill, Henfield
 Toilets on site. All weather paths and disabled toilet.
 Compass Bus no. 100 stops outside Woods Mill.

Saturday 10th December Stanmer Park, Lewes Road, Brighton
 Meet on the green in front of the church.
 Toilets and café in Stanmer Village. Not suitable for the disabled.
 Trains to Falmer Station. Buses no. 28 and 29 stop at park entrance. One mile walk to meeting point.

Saturday 10th December Tilgate Park, Crawley
 Meet in the main car park, Tilgate Park, Titmus Drive, Crawley, RH10 5PQ.
 No. 2 bus stops along Ashdown Drive then 800m to park.
 Toilets and disabled toilets.

Saturday 17th December Owlbeech and Leechpool Woods, Horsham
 Meet in the main car park, Harwood Road, Horsham RH13 6SG.
 No toilets or disabled access.
 Bus No. 65 stops on Harwood Road close to the entrance to the woods.

Time 11:00 - 13:00
Cost Members: Adults £5 /Child £6 / Family Ticket £13.
 Non-members: Adult £6 /Child £7
Suitability Suitable for 6-11 year olds. All children must be accompanied by an adult
Dogs Sorry no dogs
Booking ***Book on-line or call 01273 497561***



Bird Boxes

Come and make a bird box for our feathered friends and some edible treats for them, too.

Booking essential.



Woods Mill!!

Meet at Woods Mill, Henfield

Dates Saturday 11th February
Time 11:00 - 13:00

Toilets available. Disabled toilets and all weather paths.

Compass Bus no. 100 stops outside Woods Mill



Lewes!

Meet at Linklater Pavilion, Railway Land Nature Reserve, Railway Lane, Lewes, BN7 2FG

Dates Saturday 4th February
Time 11:00 - 13:00

Toilets in Linklater Pavilion. Some all weather paths, but wheelchair users may not be able to participate in all activities.

Town centre buses 2 minutes walk away.
Lewes railway station 10 minutes walk away.

for Spring

Members: Adults £5 /Child £6 / Family Ticket £13.

Non-members: Adult £6 /Child £7

Suitable for 6-11 year olds. All children must be accompanied by an adult. Sorry no dogs.

STANMER PARK!

Meet on the green in front of the Church in Stanmer Park

Dates Saturday 18th February
Time 11:00 - 13:00

Toilets and café in Stanmer Village. Not suitable for the disabled. Sorry no dogs.

Buses 24 and 25 from Brighton stop outside Stanmer Park. Falmer Station less than 1 mile away. Bus no. 78 will take you into the park itself.



TILGATE PARK!

Meet in the main car park, Tilgate Park, Titmus Drive, Crawley, RH10 5PQ

Dates Saturday 18th February
Time 11:00 - 13:00

£3 car park charge applies.

Toilets and disabled toilets.
No. 2 bus stops along Ashdown Drive then 800m to park.

OWLBEECH & LEECHPOOL WOODS!

Meet in the main car park, Owlbeech & Leechpool Woods, Harwood Road, Horsham, RH13 6SG

Dates Saturday 25th February
Time 11:00 - 13:00

£3 car park charge applies.

Toilets and disabled toilets.
No. 65 bus stops on Harwood Road close to the woods.

We're Going on a Bear Hunt!

Venue Seven Sisters Country Park
Date Thursday 12th April
Time 10:30 - 13:00
Leader Penny Hotchkin
Cost Members: Adults £5 /Child £6 / Family Ticket £13.
 Non-members Adult £6 /Child £7
Suitability Family event. Suitable for 4-7 year olds. Children must be accompanied by an adult
Dogs Sorry no dogs
Booking Book on-line or call 01273 497561

Bring your teddy bears down to Friston Forest for a picnic and discover what other animals live in the woods. Bring your own picnic. Booking essential.

Toilets/disabled toilet at Seven Sisters Country Park. Disabled access to Pump Barn. Limited disabled access to woodland. Car park charges apply. Meet at the Pump Barn behind the Visitor Centre.

Regular bus service from Eastbourne and Brighton along A259



fancy a Weekend Away?



why not join one of our family weekend breaks?

A Weekend with a View

Venue Alfriston Youth Hostel
Date Sat 24 & Sun 25 September
Time 10:00 Sat - 15:00 Sun
Leader Ronnie Reed
Cost Adults £54, Children (U-17) £39

The weekend begins with a walk from Alfriston Youth Hostel along the ridge of the South Downs Way with a view of the white horse at Jevington, and then through Friston Forest dressed in autumn colours to the Seven Sisters Country Park. A walk down the Cuckmere river valley takes us to the magnificent Seven Sisters where the afternoon is spent rock pooling beneath the towering white cliffs. The return walk to the Youth Hostel follows the Cuckmere River upstream. In the evening expect a visit from a bygone, local smuggler and a treasure hunt. Sunday is spent in Friston Forest with lots of fun activities in the woodland for the whole family and lunch cooked on a camp fire. Please bring a packed lunch for Saturday. All other food provided. Contact on day of event 01323 870100 or 07950 820326.

Family event suitable for children aged 10 and above. All children must be accompanied by an adult. Kit list available on request. Sorry no dogs. No disabled access at Youth Hostel. Disabled toilets at Visitor Centre, Seven Sisters Country Park. Restricted disabled access to woodland and beach. Railway station at Seaford. Cuckmere Community Bus from Sutton Corner, Seaford to Alfriston Youth Hostel Alfriston Youth Hostel, Frog Firle, Alfriston, Polegate, East Sussex, BN26 5TT



Fun for all 5 to 12 year olds who love nature. Come to one of our events organised by the junior branch of Sussex Wildlife Trust. Events open to everyone.



Hailsham Watch Group

Events at Abbots Wood near Hailsham. Meet at the main car park at Abbots Wood (Forestry Commission site).

Suitable for ages 5-12 yrs. All children must be accompanied by an adult. Events led by Lisa Stevens
 Booking essential - 01323 844094

Potions, Paints and Ointments

Venue Abbots Wood, Hailsham
Date Sunday 11th September
Time 14:00 - 16:00
Leader Lisa Stevens
Cost Free - but you can donate on-line
Booking Call 01323 844094



Natural colours from the woods. Booking essential as numbers will be limited. Please ring 01323 844094. There is a £2.00 parking fee for the Forestry Commission car park

Toilets Available at site
Access No disabled access
Transport No public transport available

Dormice!

Venue Abbots Wood, Hailsham
Date Sunday 9th October
Time 10:00 - 12:00
Leader Lisa Stevens
Cost Free - but you can donate on-line
Booking Call 01323 844094



We will be checking dormice boxes with a Forestry Commission Ranger before these cute little rodents hibernate. Booking essential as numbers will be limited. Please ring 01323 844094. There is a £2.00 parking fee for the Forestry Commission car park.

Toilets Available at site
Access No disabled access
Transport No public transport available

Den Building and Bridges

Venue Abbots Wood, Hailsham
Date Sunday 13th November
Time 10:00 - 12:00
Leader Lisa Stevens
Cost Free - but you can donate on-line
Booking Call 01323 844094

Bushcraft skills for beginners. Booking essential as numbers will be limited. Please ring 01323 844094. There is a £2.00 parking fee for the Forestry Commission car park.

Toilets Available at site
Access No disabled access
Transport No public transport available

Fire Making and Favourite Games

Venue Abbots Wood, Hailsham
Date Sunday 11th December
Time 10:00 - 12:00
Leader Lisa Stevens
Cost Free - but you can donate on-line
Booking Call 01323 844094

Even in the middle of winter there is fun to be had in the woods. Booking essential as numbers will be limited. Please ring 01323 844094. There is a £2.00 parking fee for the Forestry Commission car park.

Toilets Available at site
Access No disabled access
Transport No public transport available



Mid-Sussex Watch Group

Events at various locations. Suitable for ages 5-12 yrs. The paths are well defined, but can be muddy. Sorry no dogs. All children must be accompanied by an adult. Booking essential. For further details and booking please ring Phil Haskell on 01444 414381 (evenings) or Melanie Ellis on 01444 248272

Wildlife Safari - Chailey Common LNR

Venue Chailey Common
Date Sunday 11th September
Time 14:30 - 16:30
Leader Phil Haskell
Cost Free - but you can donate on-line

Following in the footsteps of our ancestors in the heart of wild Sussex. A chance to explore the special sights, sounds, and smells lurking within the heather, gorse, bracken, and bogs of a wild heath. Will we find the trail of the "Sussex Puma", and can we discover what is meant by "A Heathland Harvest"?

Toilets Not available
Access No disabled access
Transport no public transport available
Grid Ref TQ376207, nearest postcode BN8 4DY

Wildlife Tracking at Blunts Wood and Paiges Meadows

Venue Blunts Wood, Haywards Heath
Date Sunday 16th October
Time 14:30 - 16:30
Leader Phil Haskell
Cost Free - but you can donate on-line

Come and discover the art of looking for signs of the wildlife that inhabit the countryside within suburban Sussex. Search for the tracks, and other clues that animals have left behind in the ancient woodland and meadows. Explore the soundscape of the trees, as we listen out for the birds and mammals gathering the wild seasonal harvest. Learn of the importance and methods of recording your observations, and how you can take it further in your own backyard. Meet at Blunts Wood Crescent car park, Haywards Heath.

Toilets Not available
Access No disabled access
Transport no public transport available
Grid Ref TQ 318247, nearest postcode RH16 1NE

Buchan Birdwatch

Venue Buchan Country Park Countryside Centre
Date Saturday 21st January
Time 11:00 - 13:00
Leader Phil Haskell
Cost Sussex Wildlife Trust Watch members free. Non-members £3 per child. Accompanying adults free.

Booking 01293 542088

A chance for families to help the W.S.C.C. Rangers record the birds visiting Buchan Country Park. Learn how to be a bird detective, a master chef and restaurant owner for our feathered customers. Enjoy making bird cake and feeders, plus bird spotting, quizzes and games. Booking essential.

Toilets Available
Access Disabled access to surfaced paths
Transport Bus service to Dorsten Square, Bewbush, Crawley. Then walk south from the bus stop past the Leisure centre, over the A2220 on a footbridge to the Park's entrance.



Wildlife Safari - In Search of Spring

Venue Bedelands Farm LNR, Burgess Hill
Date Sunday 25th March
Time 13:30 - 16:00
Leader Phil Haskell
Cost Free - but you can donate on-line

Follow in the webbed footsteps of our amphibian cousins as we search for water and wildlife in the wilds of Bedelands Farm Nature Reserve. A chance to discover what lies in the murky depths of the reserve's ponds. Wear appropriate clothing and footwear for the weather and pond-dipping.

Meet at Leylands Park Football Club car park (off Maple Drive, follow the brown reserve signs) Burgess Hill.

Toilets Not available
Access No disabled access
Transport Nearest rail Wivelsfield
Grid Ref TQ 317203, nearest postcode RH15 8DL

Bognor Watch Group

Events at various locations. Suitable for ages 5-12 yrs. All children must be accompanied by a responsible adult. Contact John Knight on 01243 552030 for more information.

Silent Flyers

Venue Slindon - Meet at Park Lane car park, Park Lane, Slindon (off A29)
Date Saturday 10th September
Time 20.00 - 22:00 approx.

Leader John Knight
Cost Free - but you can donate on-line
A chance to see some very colourful moths and other night creatures. Please bring sunglasses as the moth trap has a very bright light. If it is raining the event will be cancelled. Contact John Knight on 01243 552030 for more information.

Toilets Not available
Access No disabled access
Transport no public transport available
Grid Ref SU960078;
nearest postcode BN18 0QY

Arty Crafty

Venue Aldingbourne Centre, Blackmill Lane, Norton, Chichester PO18 0JP. (Turn right off A27 ½m past Fontwell Racecourse going towards Chichester)
Date Sunday 23rd October
Time 14:00 - 15:00
Leader John Knight
Cost Free - but you can donate on-line

Have a go at 'bark rubbing' and leaf printing. Also try your hand at making a woodland shelter. Contact 01243 552030.

Toilets Available
Access Disabled access
Transport no public transport available
Postcode PO18 0JP



Homes for Wildlife

Venue Meet at WSCC Barnham Depot, Barnham Lane, Barnham - look for large Watch sign.
Date Sunday 20th November
Time 14:00 - 15:30
Leader John Knight
Cost Free - but you can donate on-line

Build a home for birds or bugs. Also get your hands mucky making a treat for birds. Please bring a hammer with you.

Toilets Available
Access Disabled access
Transport no public transport available
Postcode PO18 0JP



A Cute and Furry Experience

Venue Meet at Park Lane car park, Park Lane, Slindon (off A29)
Date Sunday 25th March
Time 10:00 - 12:00
Leader John Knight
Cost Free - but you can donate on-line

A chance to come face to face with small mammals. Also what's in an owl pellet? Have a go at looking into a wonderful world of 'bones and skulls' Duration of walk less than 1 mile. Contact John Knight on 01243 552030 for more information.

Toilets Not available
Access No disabled access
Transport no public transport available
Grid Ref SU960078;
nearest postcode BN18 0QY

Sussex Wildlife Trust Courses

There's a huge range of adult courses available this year, covering such diverse subjects as the identification of plants, birds and other animals, to the ecology of our Sussex habitats, or developing your artistic skills, to training courses for those volunteering or working in conservation-based projects.

Only a selection can be printed here - for the full brochure look online at sussexwildlifetrust.org.uk or ask for a brochure by calling Filma on 01273 497561, or mail filmadyer@sussexwt.org.uk

Booking

For enrolment or further details on these courses please ring Filma Dyer on 01273 497561, or email swtbookings@sussexwt.org.uk

Additional courses may be added during the year and details will appear on our website www.sussexwildlifetrust.org.uk/events/index.htm

- All courses need to be booked in advance. Bookings will be held for seven working days until payment is received. If payment has not been received within this period places will be reallocated. Once payment has been received confirmation will be given, preferably by email. Payment can be by debit/credit card over the phone or online, by cheque or by calling in to the Trust office at Woods Mill, Henfield during normal opening times (Mon-Fri 09:00 – 17:00)
- Course information and a location map or grid reference will be sent to all attendees at least one week before the course begins
- Please note that there will be no refunds for any cancellation within two weeks of the course. There will be an administration charge of £5 for all other cancellations
- We reserve the right to cancel or change a course at short notice. Courses will only run if a minimum number of people have booked. Attendees will be notified in advance if we do have to cancel any of our courses and the full fee refunded

General Information

- Please bring a packed lunch for day courses. Tea and coffee will be provided unless otherwise advised
- For courses involving time out in the field, please wear suitable clothing and footwear for the season and bring water, sunscreen and insect repellent if required
- Some field trips will involve walks over uneven surfaces and may contain stiles and moderate to steep slopes. General conditions and access for wheelchairs will be advised for individual courses. Woods Mill nature reserve and classroom are accessible for wheelchairs
- Please advise your tutor of any medical conditions that may affect your attendance at the course

The Life and Times of the Brown Hare

Venue	The Downs Barn, Sompting, nr Worthing
Date	Thursday 15th September
Time	10:30 – 16:30
Tutor	Peter Thompson, Biodiversity Officer, Game and Wildlife Conservation Trust (lead organisation for the Brown Hare Biodiversity Action Plan)
Cost	Members/concessions £24.00 Non-members £34.00

A one day course looking at the ecology and habitats of the brown hare, including indoor and outdoor sessions

Learn about

- The brown hare's history, ecology, population changes and year-round habitat requirements
- Reasons behind its decline in areas of the UK

Course Highlights

- Outdoor sessions to look at the brown hare's habitat requirements and how it can co-exist with modern day farming techniques
- Benefits to other wildlife when managing for brown hares
- Looking at creating new habitats

Small Mammal Trapping and Surveys

Venue	Woods Mill, Henfield
Date	Saturday 15th October
Time	10:00 – 16:00
Tutor	Sarah Patton MBNA
Cost	Members/concessions £24.00 Non-members £34.00

Find out about the small mammals of Sussex and how to look for them.

Learn about

- Shrews, mice, voles and other small mammals
- How we can look for mammal signs

Course Highlights

- A field session opening small mammal traps and examining mammals 'in the hand'

Sussex Sea Life – From Mammals to Sharks

Venue	Southwick Community Centre
Date	Saturday 12th November
Time	10:00 – 16:00
Tutor	Stephen Savage
Cost	Members/concessions £24.00 Non-members £34.00

An introduction to some of the larger species of marine life that live around the UK and particularly off the Sussex coast with Stephen Savage who has been involved in monitoring Sussex sea mammals since 1991.

Learn about

- Natural history of a variety of marine species
- Unusual sightings off Sussex including sunfish, marine turtles and Sussex shark species
- A local seal satellite tagging project
- The chances of a great white shark ever visiting the Sussex coast



An Introduction to Birds and Birdwatching

Venue Woods Mill, Henfield
and field trips at various locations
Date from Tuesday 17th January – June
Time Tuesdays 19:00 – 21:00
Saturdays various times
Tutor Mike Russell
Cost to be advised

A six-month course discovering the birds of Sussex and how to identify them. Indoor meetings on Tuesday evenings partnered with field trips on Saturdays. Suitable for beginners or those with some general knowledge.

Learn about

- Identification techniques, bird song, migration, surveying and recording

Course Highlights

- Outdoor field trips to some of the best bird sites in Sussex



Sussex Ferns

Venue Woods Mill, Henfield
Date Saturday 5th November
Time 10:00 – 16:00
Tutor Sarah Patton MBNA
Cost Members/concessions £24.00
Non-members £34.00

Get to grips with this fascinating and sometimes overlooked group of plants, and unravel the mysteries of fern identification!

Learn about

- The different ferns found in Sussex
- Fern ecology

Course Highlights

- A classroom session with live and herbarium specimens
- A field walk to see ferns



An Introduction to Woodland Bryophytes

Venue Woods Mill, Henfield
Date Tuesday 15th November
Time 10:00 – 16:00
Tutor Graeme Lyons
Cost Members/concessions £24.00
Non-members £34.00

A short presentation showing the anatomy of bryophytes (mosses and liverworts), why they are important and how to identify them. We will then spend the rest of the session on the reserve looking at bryophytes in the field.

Learn About

- Woodland mosses and liverworts and how to identify them

Course Highlights

- Course attendees will learn to identify 20-30 common woodland bryophytes, and gain the knowledge to develop their skills further with this fascinating group of plants.



Habitat Management for Invertebrates

Venue Woods Mill, Henfield
Date Saturday 3rd December
Time 10:00 – 16:00
Tutor Graeme Lyons
Cost Members/concessions £24.00
Non-members £34.00

How to plan and manage the best habitats for invertebrates - the building blocks for a properly functioning ecosystem, whether on a nature reserve or in a garden.

Learn about

- The importance of deadwood
- Sympathetic management and what to do with waste products
- Rotational management
- Management of plants and layered vegetation

Putting Together a Site Management Plan – A Beginner's Guide

Venue Woods Mill, Henfield
Date Friday 14th October
Time 10:00 – 16:00
Tutor Laura Brook and SWT Staff
Cost Members/concessions £24.00
Non-members £34.00

The course is aimed at individuals, or members of Local Friends, or wildlife groups, who are involved in looking after one or more areas of land.

Learn about

- The advantages of having a site management plan and how to put one together

Price includes Site Management Plan booklet

did you know?

that the Sussex Wildlife Trust

- manages over 30 nature reserves
- educates over 20,000 children every year
- campaigns for wildlife conservation from Parish to Parliament
- works with land owners, companies and communities to conserve Sussex
- acts as an information centre for all wildlife, habitat and conservation issues

can you help us to keep up the work?

you can make a donation online:

visit

sussexwildlifetrust.org.uk

and click on the 'Donate' button

you can make a donation by text:

text: **WILD23** (space) **£** + the amount you'd like to donate

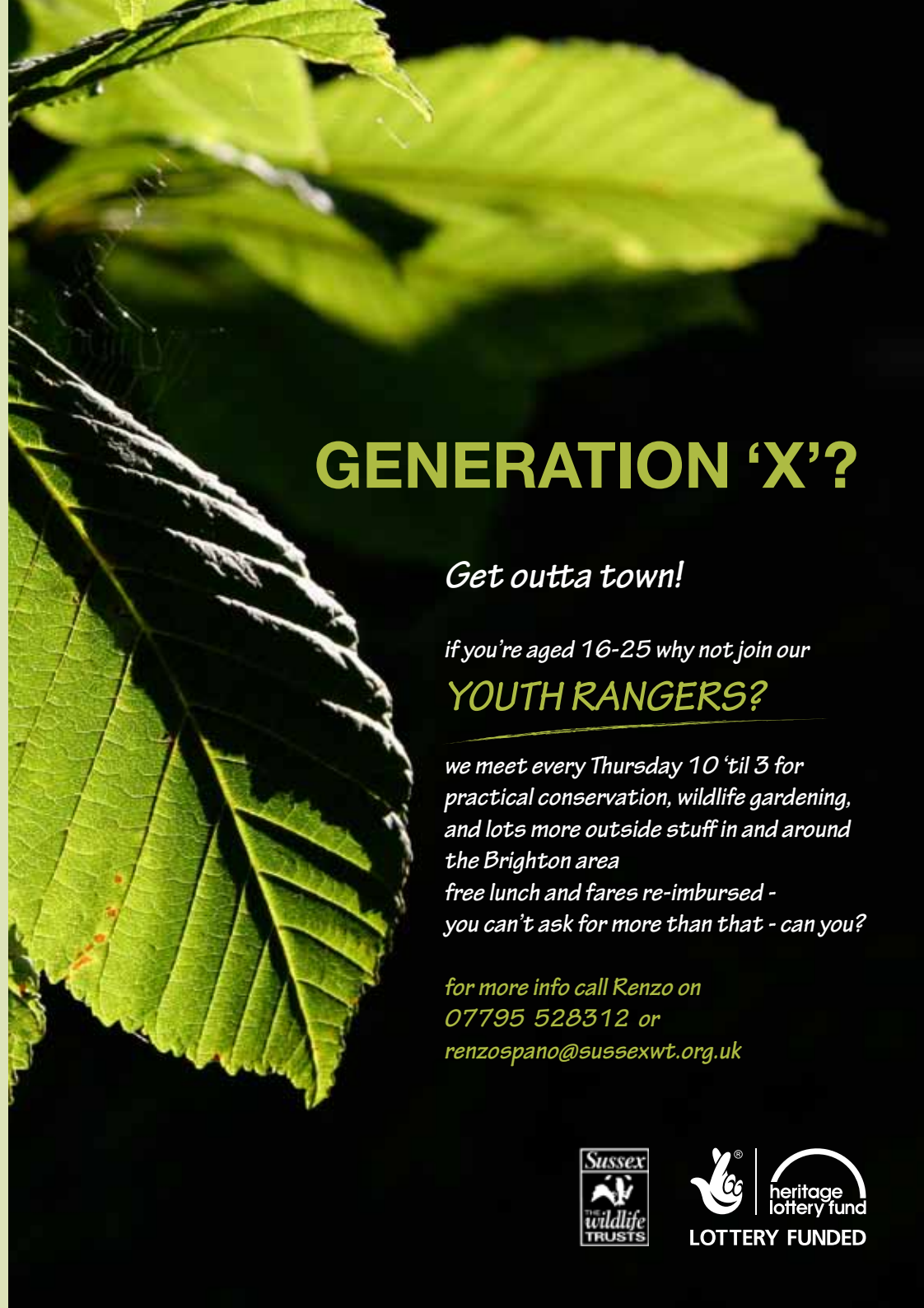
to **70070**

you can donate £1, £2, £3, £4, £5 or £10

you'll receive a confirmation of your donation and
the opportunity to add gift aid at no extra cost to you,
and there's no charge for the text

thank you

Registered Charity
No. 207005



GENERATION 'X'?

Get outta town!

if you're aged 16-25 why not join our

YOUTH RANGERS?

*we meet every Thursday 10 'til 3 for
practical conservation, wildlife gardening,
and lots more outside stuff in and around
the Brighton area*

*free lunch and fares re-imbursed -
you can't ask for more than that - can you?*

for more info call Renzo on

07795 528312 or

renzospano@sussexwt.org.uk



Quick Guide to Wildlife Events in 2011/2012

September

Sun 4	Moths and Marsh Frogs	4
Wed 7	Cruise Alongside The Ouse : Upstream	4
Thur 8	Cruise Alongside The Ouse : Downstream	4
Sun 10	Silent Flyers	27
Sun 11	Potions, Paints and Ointments	25
Sun 11	A Wildlife Safari at Chailey Common - Mid Sussex Watch	26
Wed 14	Strange Phantoms - The Heathland Wildlife of West Sussex	5
Sat 17	Wildlife Walk at Iping Common	5
Sat 17	Wildlife Walk at Graffham Common	5

October

Sat 8	Poo and Paw Prints - Lewes	16
Sun 9	Dormice - Hailsham Watch Event	25
Sat 15	Poo and Paw Prints - Stanmer Park	16
Sun 16	Wildlife Tracking at Blunts Wood	26
Sat 22	Poo and Paw Prints - Woods Mill	16
Sun 23	Arty Crafty - Bognor Watch Event	27
Tues 25	Autumn Holiday Club - Autumn Camp - Seven Sisters	14
Tues 25	Bushcraft for Children - Crawley	11
Tues 25	Autumn Watch - Bexhill	16
Wed 26	Forest School Taster Day - Bexhill	17
Wed 26	Bushcraft for Children - Horsham	11
Wed 26	Adventures of Stickman - Woods Mill	17
Thur 27	Adventures of Stickman - Portslade	17
Fri 28	Halloween Horrors - Woods Mill	20
Sat 29	Halloween Horrors - Woods Mill	20

November

Sun 13	Den Building and Bridges - Hailsham Watch Event	25
Sun 20	Homes for Wildlife - Bognor Watch Event	27

Sat 26	Tree Dressing - Lewes	21
--------	-----------------------	----

December

Sat 3	Tree Dressing - Woods Mill	21
Sat 3	A Winter's Tale - Seven Sisters	20
Sat 10	A Figure of 8 Heathland Hike Iping and Stedham Commons	8
Sat 10	Tree Dressing - Stanmer Park	21
Sat 10	Tree Dressing - Crawley	21
Sun 11	Fire Making and Favourite Games Hailsham Watch Event	25
Fri 16	Bird Watch on the Lewes Brooks	8
Sat 16	Tree Dressing - Horsham	21

January 2012

Tues 3	Chalk Walk - Glynde to Lewes	9
Tues 10	Exploring Graffham Common	9
Fri 13	Jack's Back - Lewes	9
Sat 21	Buchan Birdwatch	26

February

Sat 4	Bird Boxes for Spring - Lewes	22
Sat 11	Bird Boxes for Spring - Woods Mill	22
Sat 18	Bird Boxes for Spring - Stanmer Park	23
Sat 18	Bird Boxes for Spring - Crawley	23
Sat 25	Bird Boxes for Spring - Horsham	23

March

Sun 18	Spring Returns to Graffham Common	10
Sun 25	A Cute and Furry Experience Bognor Watch Event	27
Sun 25	Wildlife Safari - In Search of Spring Mid Sussex Watch	26

April

Tues 3	Easter Holiday Club - The Firston Trail - Seven Sisters	15
Tues 3	Easter Holiday Club - Stanmer Park	13
Wed 4	Gruffalo Pie - Seven Sisters	17

Wed 4	Easter Holiday Club - Stanmer Park	13
Thur 5	Easter Holiday Club - Crawley	13
Thur 5	Easter Holiday Club - The Friston Camp - Seven Sisters	15
Tues 10	Easter Holiday Club - Horsham	13
Tues 10	Easter Holiday Club - Trails and Signs - Seven Sisters	15
Wed 11	Easter Holiday Club - Stanmer Park	13
Thur 12	Easter Holiday Club - Crawley	13
Thur 12	We're Going on a Bear Hunt - Seven Sisters	24
Fri 20	Spring Migrants Return to Lewes	10

Weekends Away

24-25 Sept	Weekend With A View Seven Sisters	24
---------------	--------------------------------------	----

Courses

15 Sept	Life and Times of the Brown Hare	29
14 Oct	Putting Together a Site Management Plan	31
15 Oct	Small Mammal Trapping and Surveys	29
5 Nov	Sussex Ferns	30
12 Nov	Sussex Sea Life - from Mammals to Sharks	29
15 Nov	Introduction to Woodland Bryophytes	31
3 Dec	Habitat Management for Invertebrates	31
17 Jan - June	An Introduction to Birds and Birdwatching	30

3 ways..

..to book a place on any of
our events or courses:

1: online

go to
sussexwildlifetrust.org.uk
and click on the 'What's On'
button at the top of the page

2: e-mail

swtbookings@sussexwt.org.uk

3: by phone

01273 497561
lines open 9-5 weekdays



keep up!

Keep up to date with what's
happening..
..sign up for

e-news

Our free monthly e-newsletter features
Trust news, features, topical wildlife stories,
species profiles, events and courses
updates *and* there's a free draw each month
to win a wildlife book!

Don't delay, sign up today at

sussexwildlifetrust.org.uk



follow us on

facebook

twitter

Sussex Wildlife Trust
Woods Mill, Henfield, West Sussex BN5 9SD
01273 492630 – Main Reception
enquiries@sussexwt.org.uk
www.sussexwt.org.uk
www.twitter.com/sussexwildlife

WildCall
01273 494777
for all your nature conservation enquiries
Registered Charity No 207005

designed by Neil Fletcher/Sussex Wildlife Trust
images by Neil Fletcher or Sussex Wildlife Trust except where stated